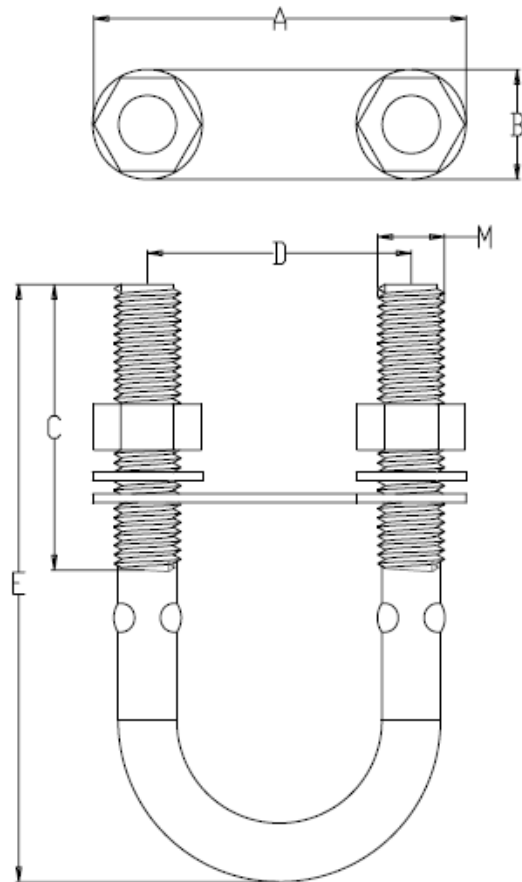


GENERAL TOLERANCE					
LINEAR			ANGULAR		
0.5-3	>3-6	>6-30	≤10	>10-50	>50-120
±0.1	±0.1	±0.2	±1'	±30'	±20'
>30-120	>120-400	>400-1000	>120-400	>400	
±0.3	±0.5	±0.8	±10'	±5'	

REV.	ZONE	DESCRIPTIONS	DWN BY	DATE



ITEM	A mm	B mm	C mm	D mm	E mm	M mm
39.126.01	45.00	12.00	30.00	30.00	60.00	M4
39.126.02	50.00	13.00	40.00	36.00	80.00	M5
39.126.03	50.00	15.00	40.00	36.00	90.00	M6
39.126.04	50.00	15.00	40.00	36.00	80.00	M8
39.126.05	70.00	20.00	55.00	52.00	90.00	M10
39.126.06	83.00	23.00	65.00	62.00	150.00	M12

CLIENT:	MODEL NO:	MATERIAL: AISI 304	
PART NAME: S413	PART NO:	CALCULATED WEIGHT: (g)	
	TREATMENT:	QTY:	PROJECTION:
	DRAWING: SHANG DATE: 2006/12/06	REVISION: 01	UNIT: MM
	CHKD: DATE:	SCALE:	PAGE OF
	APP: DATE:	FINISH:	SIZE: A4