

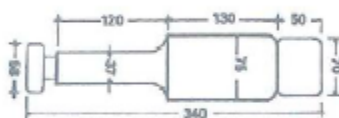
Is a new concept of trim tab system.
It consists of a revolutionary electro-mechanical system.
It is powerful, precise, trouble free and compared to the hydraulic model doesn't need a constant service of maintenance and expensive installation.



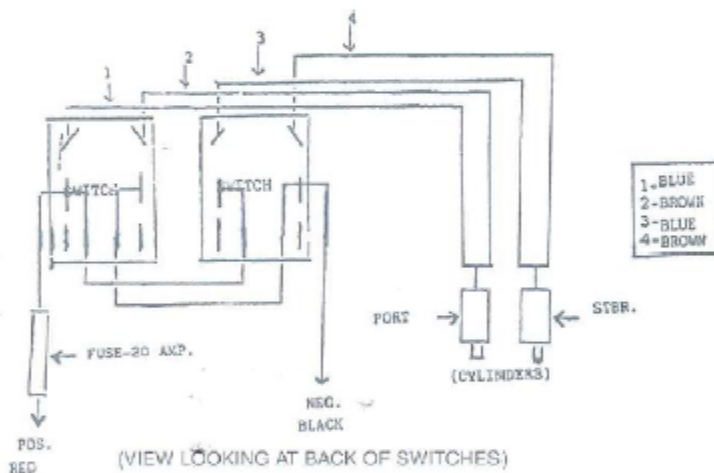
Amp. Draw.: 5.5 A. at 12 V.
2.5 A. at 24 V.



DIMENSIONS



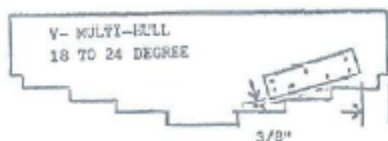
ELECTRICAL WIRING



INSTALLATION SCHEME



ROUND HULL
(A) Position so as little of hull is under tab. Must maintain 3/8" clearance.



V- MULTI-HULL
Must maintain 3/8" DIM. or MAX. of 1/2"

