

PRODUCT SPECIFICATION

A1101A - Actuator, Standard

Description:

Hydraulic Trim Tab Actuator for Bennett Trim Tab Systems

Specifications:

Mechanical:

Material	GF Nylon
Hydraulic Fluid	ATF
Mounting Hardware:	
Upper Hinge	#14 x 1-1/2" Sheet Metal Screws
Lower Hinge	1/4-20 Pan Head Screws
Fluid Port	1/8NPT

Working Forces:

Actuation Force	700lbs @ 350psi
-----------------	-----------------

Pressures:

Working Pressure	350psi
------------------	--------

Stroke:

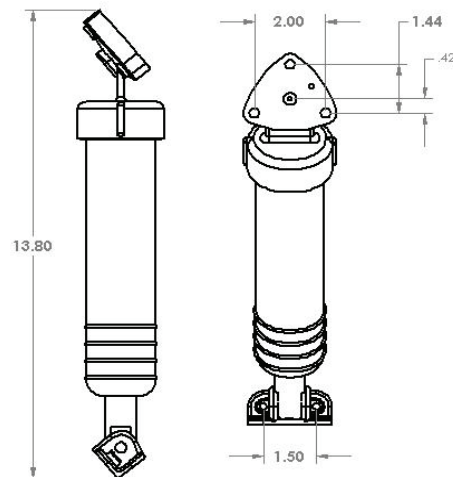
Standard Stroke Length	2.5in
Max Stroke Length	3.5in

Mounting Positions

Recommended Mounting Angle	40°-50°
Max Mounting Angle	90°
Min Mounting Angle	0° (with spacing block)

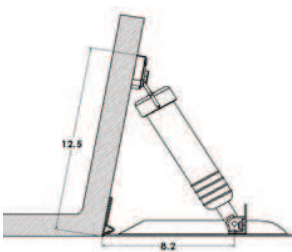
Options:

Position Sensors	
Range	0-2.5in
Resistance	230Ω
Connectors	2 position Micro Mate-N-Lock
Extended Stroke Length	3.5in Max
Reduced length	1in Reduction
Retention Device	304 SS for backing down protection
Mounting Spacers	3/8" Nylon spacer block
Pipe Nipples	1/8"NPT 2.0 - 6.0in lengths

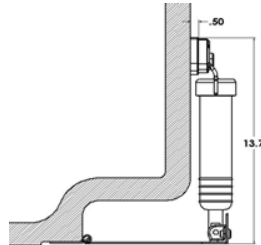


CAD Files:

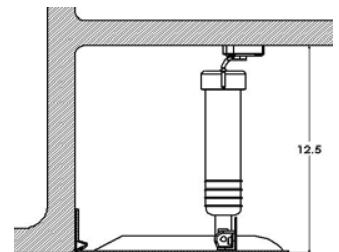
IGES, easm



Standard Actuator Position



Min Mounting Angle



Max Mounting Angle