

MARINE ELECTRIC TRIM

Is a new concept of trim tab system.

It consists of a revolutionary electro-mechanical system.

It is powerful, precise, trouble free and compared to the hydraulic model doesn't need a constant service of maintenance and expensive installation.

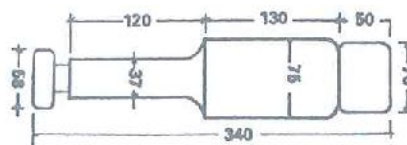


Amp. Draw.: 5.5 A. at 12 V.
2.5 A. at 24 V.

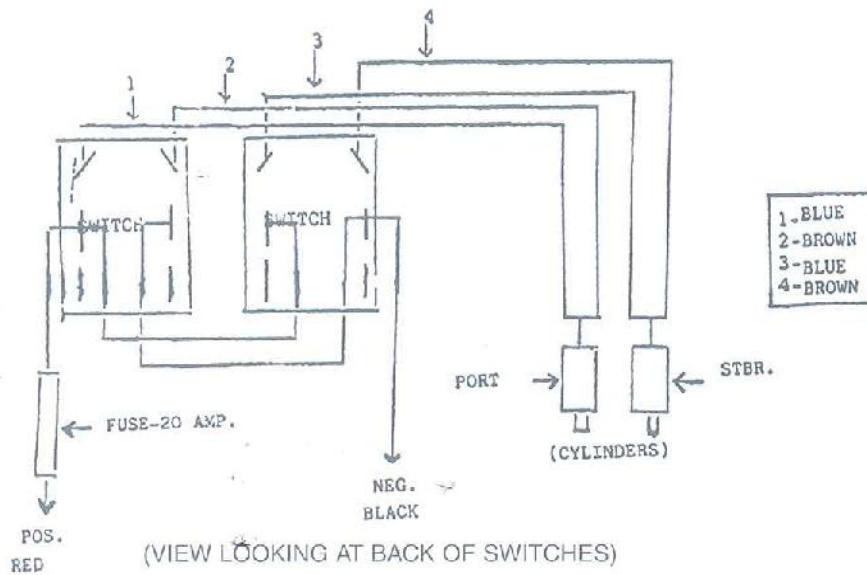
- CD. 30000812 CYLINDER 12 V.
- CD. 30000824 CYLINDER 24 V.
- CD. 30000912 CYLINDER PAIR 12 V.
- CD. 30000924 CYLINDER PAIR 24 V.
- CD. 31000912 ELECTRIM 9 x 12"

- CD. 30000916 ELECTRIM 9 x 16"
- CD. 30000922 ELECTRIM 9 x 22"
- CD. 30001212 ELECTRIM 12 x 12"
- CD. 30001218 ELECTRIM 12 x 18"
- CD. 30000911 CONTROL TRIM

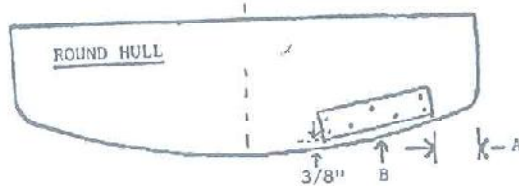
DIMENSIONS



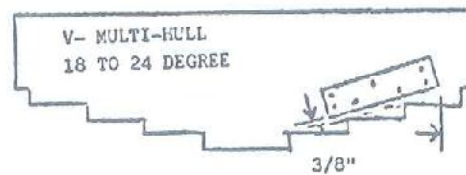
ELECTRICAL WIRING



INSTALLATION SCHEME



ROUND HULL
(A) Position so as little of hull is under tab. Must maintain 3/8" clearance.



V- MULTI-HULL
Must maintain 3/8" DIM. or MAX. of 1/2"

